

LLOHD-XDN

Logic Element

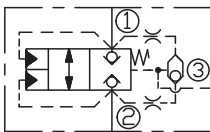
DESCRIPTION

A cartridge-style, vent-to-open, spring biased closed, unbalanced poppet logic element with pilot source from port ① or port ②

OPERATION

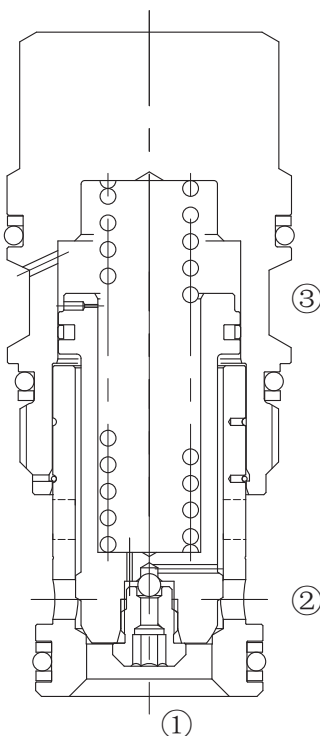
These unbalanced, vent-to-open logic valves are 2-way switching elements that are spring-biased closed and incorporate an integral shuttle so that the higher of pressures at either port ① or port ② can be used as a pilot source. With port ③ blocked, the valve is held in the closed position by the spring force. With port ③ vented, the valve will open provided there is sufficient pressure to overcome the spring force. The force generated at port ③, plus the spring force, must be greater than the sum of the forces acting at port ① and port ② for the valve to remain closed. NOTE: The pilot area (port ③) is 1.8 times the area at port ① and 2.25 times the area at port ②.

SYMBOL

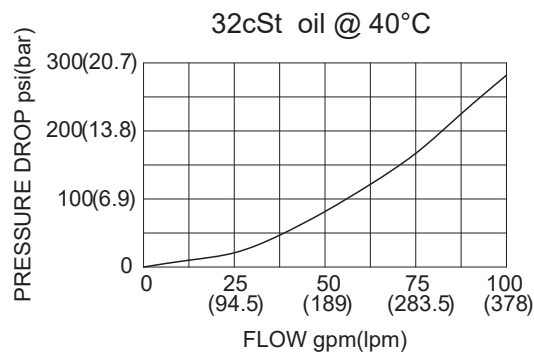


SPECIFICATIONS

Max.Operating Pressure	350bar
Flow	See PRESSURE DROP VS.FLOW graph.
Internal Leakage	10 drops/min max.
Temperature	-40°F to +250°F(-40°C to +120°C)
Filtration	See Page N-1
Fluids	Mineral-based fluids with viscosities of 7.4 to 420 cSt.
Cavity	SUN T-17A,See page M-7
Housing Material	Steel & Ductile iron rated to 350bar



PRESSURE DROP VS.FLOW



TO ORDER

LLO H D - X * * - * *

1
2
3
4
5
6
7

<p>1 Function LLO=Unbalanced Poppet Logic Element</p>	<p>4 Control X=Not-adjustable</p>	<p>7 Port Size Omit= None 12T=SAE 12 16T=SAE 16 6G=G 3/4 8G=G 1</p>
<p>2 Capacity H=380L/min</p>	<p>5 Cracking Pressure D=50psi(3.5bar)</p>	
<p>3 Pilot Source D=From Port ① or ②</p>	<p>6 Seal N=Buna N V=Viton</p>	<p>※ See page K-25—K-26 for detail of housing ※ Other port sizes are available</p>

INSTALLATION DIMENSIONS

Unit=Millimeters

H

