

# LSV2-M20-4RCO

4-Way,2-Position,  
Spool-type Solenoid Valve

## DESCRIPTION

A solenoid operated, 4-way, 2-position, spool-type cartridge valve.

## OPERATION

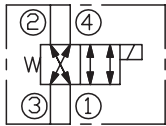
When de-energized, the valve allows flow from ③ to ④ or from ④ to ③ and from ② to ① or from ① to ② . When energized, the cartridge's spool shifts to allow flow from ③ to ② or from ② to ③ and from ④ to ① or from ① to ④ .

### Operation of Manual Override Option

M: To override, push button in to activate. To return to normal valve function, release button.

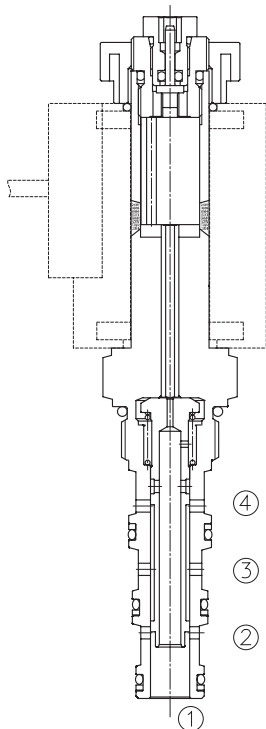
MK: To override, twist clockwise 2 turns. In this position, the valve will allow flow ③ to ② and from ④ to ① . To return to normal operation, twist counterclockwise 2 turns.

## SYMBOL

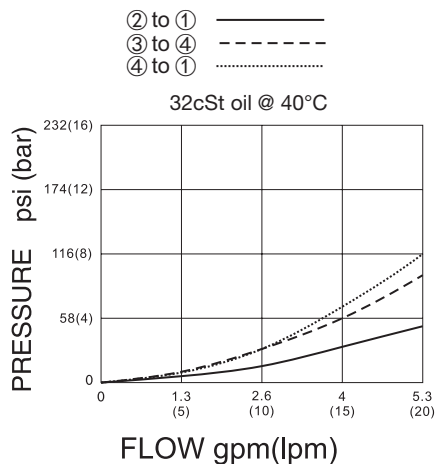


## SPECIFICATIONS

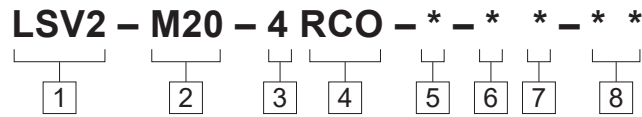
Operating Pressure	350bar
Flow	See PERFORMANCE CHARACTERISTIC graph.
Internal Leakage	82cc/min max. at 350bar
Temperature	-40°F to +212°F(-40°C to +100°C)
Coil Duty Rating	Continuous from 85% to 115% of nominal voltage
Filtration	See page N-1
Fluids	Mineral-based fluids with viscosities of 7.4 to 420 cSt.
Cavity	HYDAC 08140,See page M-22
Housing Material	Steel & Ductile iron rated to 350bar



## PRESSURE DROP VS.FLOW



TO ORDER



- 1 Function**  
LSV2=Solenoid Valve

---

- 2 Size**  
M20=M20 Size

---

- 3 Flow Path**  
4=4-Way

---

- 4 Style**  
RCO=Reverse Crossover

---

- 5 Manual Override Options**  
Omit=None  
M=Manual Override

- 6 Coil Voltage**  
1=12 VDC  
2=24 VDC  
3=110 VAC  
4=220 VAC

---

- 7 Coil Connector Type**  
D= Double Lead  
H= Hirschmann  
ER= Deutsch Connector(Water-proof Coil)

- 8 Port Size**  
Omit=None  
8T=SAE 8  
3G=G 3/8

---

- ※Other port sizes are available

INSTALLATION DIMENSIONS

Coil Must Be Installed With Letter Up

Unit=Millimeters

