

LHRV6-08

Direct-acting Relief Valve

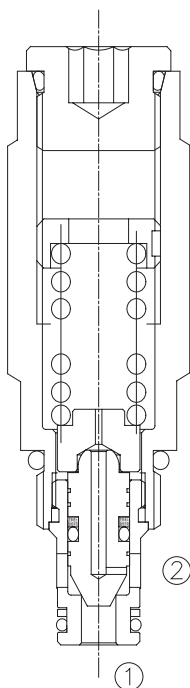
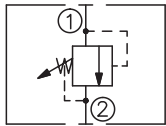
DESCRIPTION

A cartridge-style direct-acting poppet-type relief valve

OPERATION

The valve blocks flow from ① to ② until sufficient pressure is present at ① to force the poppet from its seat.

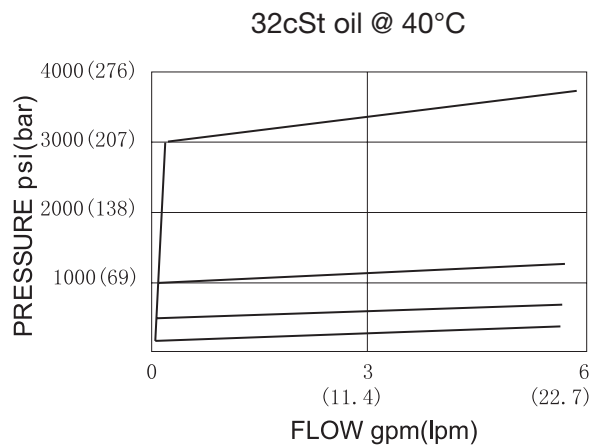
SYMBOL



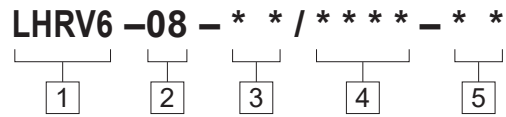
SPECIFICATIONS

Operating Pressure	250bar
Flow	See PRESSURE DROP VS. FLOW graph.
Internal Leakage	5 drops/min max. to 80% of nominal setting
Reseat Pressure	80% of cracking pressure (cracking pressure at 0.95 lpm /0.25 gpm)
Standard Spring Ranges	3.4 to 34.4 bar; preset: 17bar 6.9 to 75.8 bar; preset: 38bar 17.2 to 158.5 bar; preset: 80bar 17.2 to 248.2 bar; preset:124bar
Temperature	-40°F to +250°F(-40°C to +120°C)
Filtration	See page N-1
Fluids	Mineral-based fluids with viscosities of 7.4 to 420 cSt.
Cavity	08-2, See page M-1
Housing Material	6061-T6 aluminum alloy rated to 207bar, Steel & Ductile iron rated to 350bar

PRESSURE DROP VS.FLOW



TO ORDER



1 Function
LHRV6 =Hidden Adjustable
Relief Valve

2 Size
08=08 Size

3 Spring Ranges
5=50-500psi(3.4-34.4bar)
 Preset:246psi(17bar)
9=100-1100psi(6.9-75.8bar)
 Preset:550psi(38bar)
18=250-2300psi(17.2-158.5bar)
 Preset:1160psi(80bar)
33=250-3600psi(17.2-248.2Bar)
 Preset:1800psi(124bar)

4 Optional Pressure Setting
 Omit=Standard Setting
 Example:0160=160Bar

5 Port Size
 Omit=None
 4T=SAE4
 6T=SAE6
 2G=G 1/4
 3G=G 3/8

※ See page K-1 for detail of housing
 ※ Other port sizes are available



INSTALLATION DIMENSIONS

Unit=Millimeters

