

LPOSRV2K-M28

Pilot-operated Pressure Limitation
And Feed Valve With External
Drain Port

DESCRIPTION

A pilot-operated pressure limitation and feed valve with external drain port.

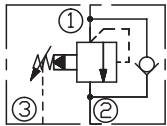
OPERATION

The valve prevents flow from ① to ② until pressure at ① exceeds the set Cracking Pressure and opens the pilot section. The pilot flow creates a pressure differential across the poppet which causes the valve to open allowing flow from ① to ② protecting the circuit from over pressurization.

If the pressure at ② is at least 2 bar higher than Pressure at ① . The main poppet will be lifted out of its seat, to allow flow from ② to ① , this feed function is used to make up for lacking hydraulic fluid volumes.

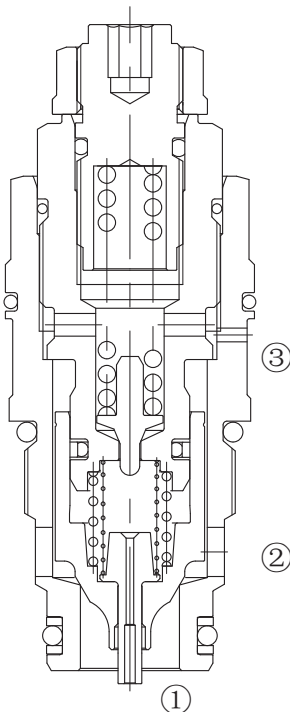
Pressure at port ③ is directly additive to the valve setting at a 1:1 ratio and should not exceed 50bar.

SYMBOL

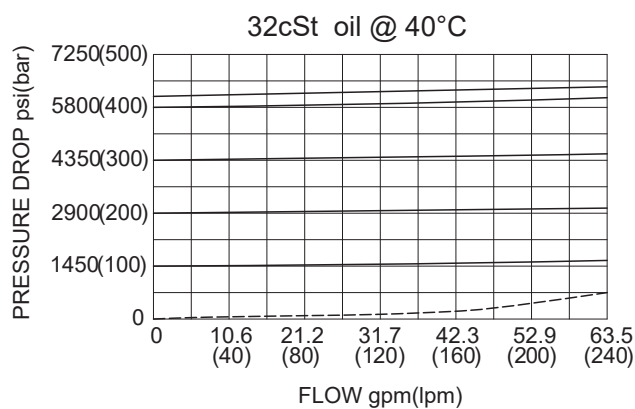


SPECIFICATIONS

Max.Operating Pressure	420bar
Max. Flow	200 L/min
Internal Leakage	10 drops/min max. to 80% of nominal setting
Temperature	-40°F to +250°F(-40°C to +120°C)
Filtration	See Page N-1
Fluids	Mineral-based fluids with viscosities of 7.4 to 420 cSt.
Cavity	Rexroth-HC, See page M-27
Housing Material	Steel & Ductile iron rated to 350bar

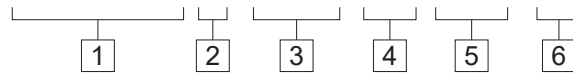


PRESSURE DROP VS.FLOW



TO ORDER

LPOSRV2 K - M28 - ** / ** - ****



1 Function
LPOSRV2=Adjustable Pilot-operated
Cartridge Relief Valve

4 Spring Ranges
60=1450-6090psi(100-420bar)
Preset:3600psi(250bar)

6 Port Size
Omit= None
10T=SAE10
6G=G 3/4

2 External Drain Port

5 Optional Prassure Setting
Omit= Preset:1885psi(130bar)
Example:0200=200bar

※Other port sizes are available

3 Size
M28=M28 Size

INSTALLATION DIMENSIONS

Unit=Millimeters

