

LSP10-20

2 way 2 position, Normally-closed
Proportional valve

DESCRIPTION

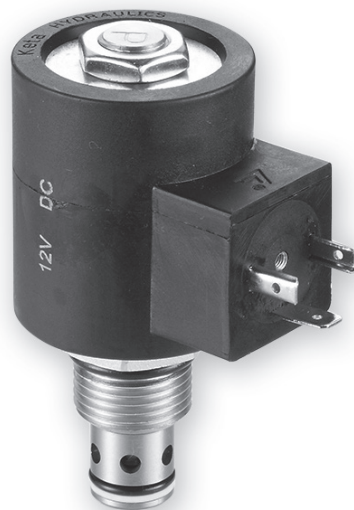
A proportional solenoid-operated, 2-way, poppet-type, normally closed, screw-in hydraulic cartridge valve

OPERATION

When de-energized, the valve acts as a check valve, allowing flow from ① to ②, while blocking flow from ② to ①. When energized, the ② to ① flow path opens. Flow is proportional to current applied to the coil. Flow varies with manual override.

SPECIFICATIONS

Operating Pressure	250bar
Flow	Without Manual Override: 68 lpm at 34.5 bar (500 psi)
Max. Internal Leakage	5 drops /min at 250 bar
Temperature	-40°F to +212°F (-40°C to +100°C)
Filtration	See page N-1
Fluids	Mineral-based fluids with viscosities of 7.4 to 420 cSt.
Cavity	10-2, See page M-2
Housing Material	6061-T6 aluminum alloy rated to 207bar, Steel & Ductile iron rated to 350bar



LRBAP

Electro-proportional Relief Valve



B

DESCRIPTION

Electro-proportional relief valve - pilot capacity

OPERATION

This 2-port, pilot-stage, direct-acting relief cartridge is an electro-proportionally controlled, pressure regulating valve. The proportional control allows for infinite, step-less adjustability within the selected pressure range. When the pressure at port ① (inlet) is sufficient to overcome the solenoid forces, as determined by the analog input signal, the poppet lifts and allows flow from port ① to port ② (outlet).

SPECIFICATIONS

Operating Pressure	350bar
Flow	See PRESSURE DROP VS.FLOW graph.
Max. Internal Leakage	25 cc/min
Temperature	-40°F to +212°F(-40°C to +100°C)
Filtration	See page N-1
Fluids	Mineral-based fluids with viscosities of 7.4 to 420 cSt.
Cavity	SUN T-8A
Housing Material	6061-T6 aluminum alloy rated to 207bar, Steel & Ductile iron rated to 350bar

