

LPD2-10-4

Piloted 3-Way Spool
Directional Valve

DESCRIPTION

A cartridge-style 3-way pilot-operated spool-type external-vent directional valve

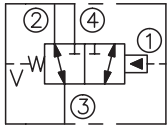
OPERATION

On no remote pilot signal at ①, the valve allows flow from ③ to ② bi-directionally, while flow is blocked at ④, spring chamber vent-to-atmosphere, which is internally O-ring sealed from the cartridge flow paths.

On remote pilot signal at ①, the valve shifts to open from ③ to ④, while blocking flow at ②.

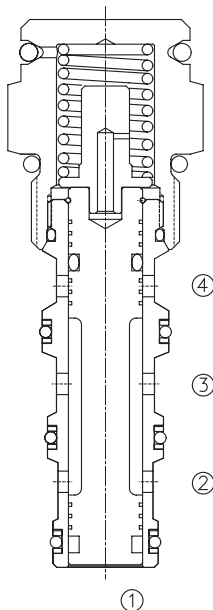
Because of the vented spring chamber, the cartridge may be fully pressurized at any port without affecting required pilot pressure.

SYMBOL

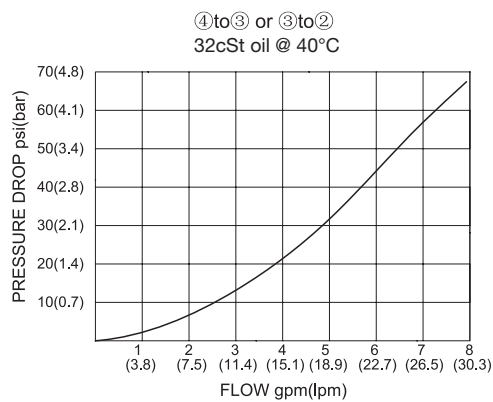


SPECIFICATIONS

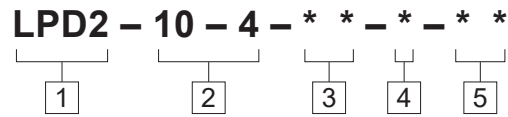
Operating Pressure	250bar
Flow	See PRESSURE DROP VS.FLOW graph.
Internal Leakage	82 cc/min max. at 250 bar
Pilot Pressure Required	To Spool Crossover 7.6 bar(110psi) To Full Spool Shift 8.6 bar(125psi)
Temperature	-40°F to +250°F(-40°C to +120°C)
Filtration	See page N-1
Fluids	Mineral-based fluids with viscosities of 7.4 to 420 cSt.
Cavity	10-4, See page M-2
Housing Material	6061-T6 aluminum alloy rated to 207bar, Steel & Ductile iron rated to 350bar



PRESSURE DROP VS.FLOW



TO ORDER



- 1 Function**
LPD2=Piloted Three-way Spool
Directional Valve

- 2 Size**
10-4=10-4 Size

- 3 Bias spring**
4=40psi(2.75bar)
6=60psi(4.1bar)
8=80psi(5.5bar)
11=110psi(7.6bar)
16=160psi(11bar)

- 4 Seal Kits**
N=Buna N(Std)
NS=Buna N with sealed piston
110psi(7.6bar)minimum spring
V=V-Fluorocarbon
VS=VS-Fluorocarbon with sealed piston
110psi(7.6bar)minimum spring

- 5 Port Size**
Omit=None
6T=SAE6
8T=SAE8
2G=G 1/4
3G=G 3/8

- ※ See page K-6 for detail of housing
- ※ Other port sizes are available

D

INSTALLATION DIMENSIONS

Unit=Millimeters

