

LPCX-10

Pilot-to-open Check Valve

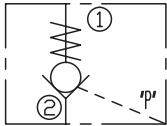
DESCRIPTION

A cartridge-style pilot-to-open poppet-type check valve

OPERATION

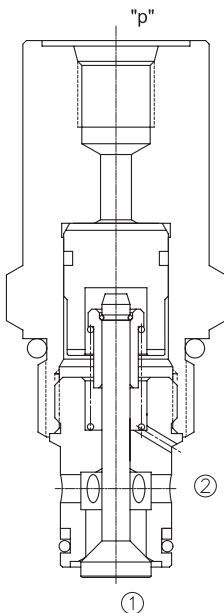
The valve allows flow from ② to ①, while normally blocking flow from ① to ②. Flow will be allowed from ① to ② when sufficient pressure is applied at port “P”. The cartridge has a 3:1 pilot ratio, meaning that at least one-third of the load pressure held at ① is required at “P” to open the valve.

SYMBOL

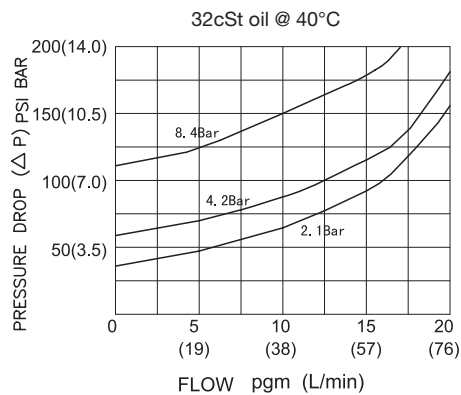


SPECIFICATIONS

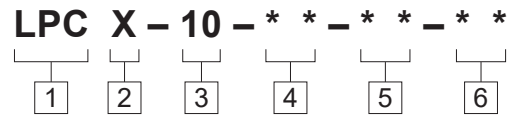
Max. Operating Pressure	350bar
Flow	See PRESSURE DROP VS.FLOW graph.
Internal Leakage	2 drops/min max. at 350bar
Cracking Pressure	2.1=2.1bar 4.2=4.2bar 8.4=8.4bar
Pilot Ratio	3:1
Temperature	-40°F to +250°F(-40°C to +120°C)
Filtration	See page N-1
Fluids	Mineral-based fluids with viscosities of 7.4 to 420 cSt.
Cavity	10-2, See page M-2
Housing Material	Steel & Ductile iron rated to 350bar



PRESSURE DROP VS.FLOW



TO ORDER



1 Function
LPC=Pilot to Open Check Valve

2 Pilot Port Part
X=TAIL PART

3 Size
10=10 Size

4 Pilot Port
"P"="P"PILOT PORT
4T=SAE4

5 Cracking Pressure
2.1=2.1bar
4.2=4.2bar
8.4=8.4bar

6 Port Size
Omit=None
6T=SAE6
8T=SAE8
3G=G 3/8
4G=G 1/2

※ See page K-4 for detail of housing
※ Other port sizes are available

D

INSTALLATION DIMENSIONS

Unit=Millimeters

