

# LPCI-08M

Pilot-to-open Check Valve

## DESCRIPTION

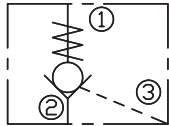
A cartridge-style pilot-to-open poppet-type check valve

## OPERATION

The valve allows flow from ② to ①, while normally blocking flow from ① to ②. Flow will be allowed from ① to ② when sufficient pressure is applied at ③.

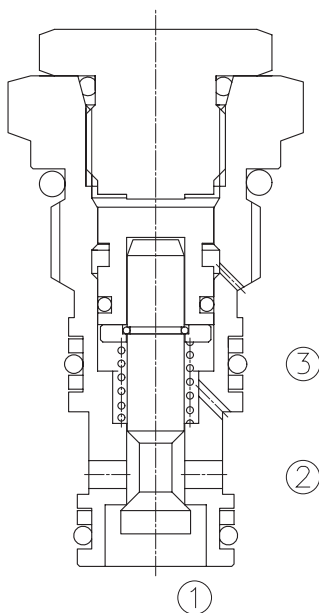
The cartridge has a 4:1 pilot ratio, meaning that at least one-fourth of the load pressure held at ① is required at ③ to open the valve.

## SYMBOL

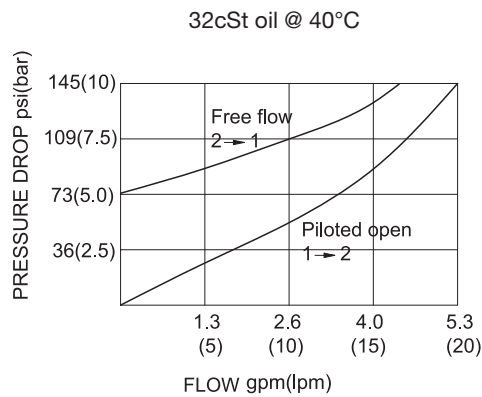


## SPECIFICATIONS

Operating Pressure	350bar
Flow	See PRESSURE DROP VS.FLOW graph.
Internal Leakage	2 drops/min max. at 350bar
Cracking Pressure	5.0=5.0bar
Pilot Ratio	4:1
Temperature	-40°F to +250°F(-40°C to +120°C)
Filtration	See page N-1
Fluids	Mineral-based fluids with viscosities of 7.4 to 420 cSt.
Cavity	08M-3, See page M-17
Housing Material	Steel & Ductile iron rated to 350bar



## PRESSURE DROP VS.FLOW



**TO ORDER**

**LPCI - 08M - \* \* - \* \***

┌───┐
┌───┐
┌───┐
┌───┐  
1
2
3
4

**1 Function**  
LPCI=Pilot to Open Check Valve

**3 Cracking Pressure**  
5.0=5.0bar

**4 Port Size**  
Omit=None  
4T=SAE4  
6T=SAE6

**2 Size**  
08M=08M Size

※Other port sizes are available

**D**

**INSTALLATION DIMENSIONS**

Unit=Millimeters

