

# LPC-10

Pilot-to-open Check Valve

## DESCRIPTION

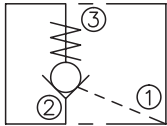
A cartridge-style pilot-to-open poppet-type check valve

## OPERATION

The valve allows flow from ② to ③, while normally blocking flow from ③ to ②. Flow will be allowed from ③ to ② when sufficient pressure is applied at ①.

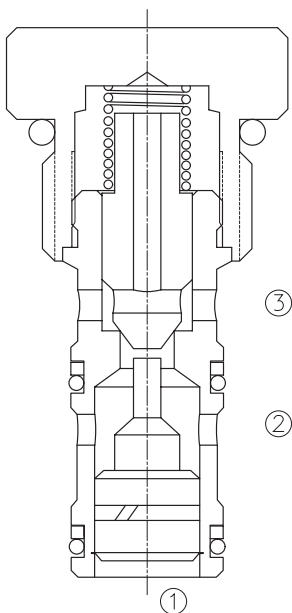
The cartridge has a 3.5:1 pilot ratio, meaning that at least 28 percent of the load pressure held at ③ is required at ① to open the valve.

## SYMBOL

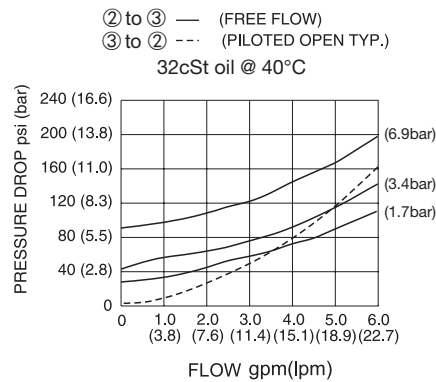


## SPECIFICATIONS

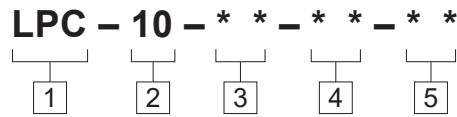
Operating Pressure	250bar
Flow	See PRESSURE DROP VS.FLOW graph.
Internal Leakage	2 drops/min max. at 250bar
Cracking Pressure	1.7=1.7bar 3.4=3.4bar 6.2=6.2bar
Pilot Ratio	3.5:1
Temperature	-40°F to +250°F(-40°C to +120°C)
Filtration	See page N-1
Fluids	Mineral-based fluids with viscosities of 7.4 to 420 cSt.
Cavity	10-3, See page M-2
Housing Material	6061-T6 aluminum alloy rated to 207bar, Steel & Ductile iron rated to 350bar



## PRESSURE DROP VS.FLOW



**TO ORDER**



- 1 Function**  
LPC=Pilot to Open Check Valve

---

- 2 Size**  
10=10 Size

---

- 3 Seal Kits**  
N=Buna N(Std)  
NS=Buna N with sealed piston  
6.2bar(90psi)minimun spring  
V=V-Fluorocarbon  
VS= VS-Fluorocarbon with sealed piston  
6.2bar(90psi)minimun spring

- 4 Cracking Pressure**  
1.7=1.7bar  
3.4=3.4bar  
6.2=6.2bar

- 5 Port Size**  
Omit=None  
6T=SAE6  
8T=SAE8  
2G=G 1/4  
3G=G 3/8

※See page K-5 for detail of housing  
 ※Other port sizes are available



**INSTALLATION DIMENSIONS**

Unit=Millimeters

