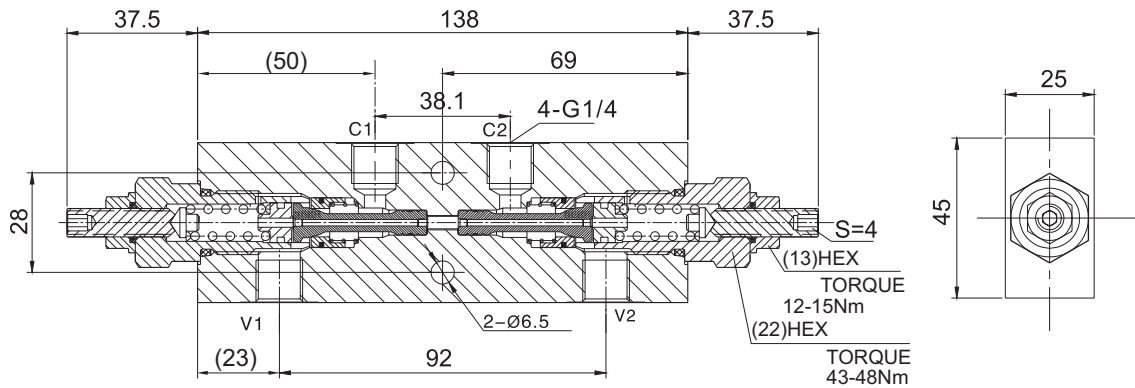


# DCB-LMB-RD78G-2G-35

Dual Counterbalance Manifolds

## DESCRIPTION

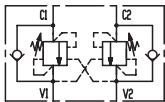
Dual counterbalance manifolds



## OPERATION

It provides static and dynamic control of load by regulating the flow IN and OUT of the actuator, through ports C1 and C2. This valve module includes 2 sections, each one composed by a check and a relief valve pilot assisted by pressure in the opposite line: the check section allows free flow into actuator, then locks the load against reverse movement; with pilot pressure applied at line across, the pressure setting of the relief is reduced in proportion to the stated ratio until opening and allowing controlled reverse flow. Back-pressure at V1 or V2 is additive to pressure settings in all functions.

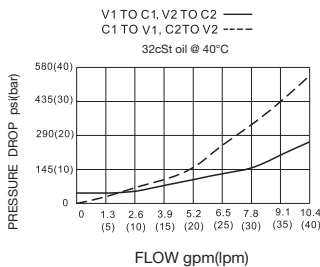
## SYMBOL



## SPECIFICATIONS

Max. Operating Pressure	350bar
Flow	See PRESSURE DROP VS.FLOW graph.
Pilot Ratio	4.1:1
Internal Leakage	5 drops/min. at nominal pressure
Temperature	-40°F to +250°F(-40°C to +120°C)
Filtration	See page N-1
Fluids	Mineral-based fluids with viscosities of 7.4 to 420 cSt.
Housing Material	Steel & Ductile iron rated to 350bar

## PRESSURE DROP VS.FLOW



## TO ORDER

### DCB - LMB - RD78G - 2G - 35



<b>1 Function</b> DCB=Dual Counterbalance	<b>5 Port Size</b> 2G=G 1/4	<b>6 Spring Range</b> 35=1450-5000psi(100-350bar) Preset:5000psi(350bar) 175bar/Turn Factory pressure setting established at 5l/min.
<b>2 ConnectionType</b>	※Other port sizes are available	
<b>3 Size</b>		
<b>4 Pilot Ratio</b> G=4.1:1		