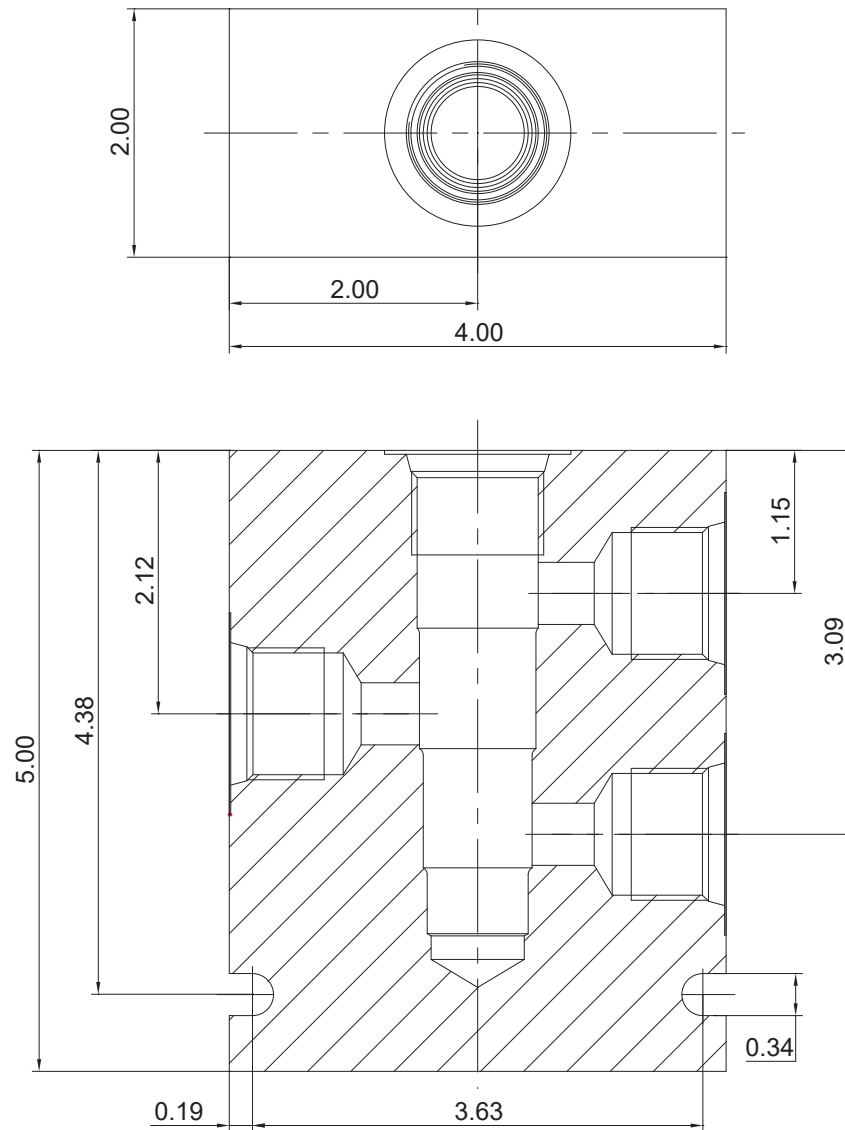


Standard Housing

Series 12 4/S-WAY Housings

4-WAY 3-PORT
Aluminum or Steel



Unit=Inches

SERIES 12 4/S-WAY HOUSINGS(LFD5-12 Only)			
Part No.	Material	Operating Pressure	Ports
LB12-4-A-10T/S	Aluminum 6061-T6	210 bar (3000 psi)	SAE 10
LB12-4-A-12T/S	Aluminum 6061-T6	210 bar (3000 psi)	SAE 12
LB12-4-A-6G/S	Aluminum,6061-T6	210 bar (3000 psi)	G 3/4
LB12-4-S-10T/S	Steel	350 bar (5000 psi)	SAE 10
LB12-4-S-12T/S	Steel	350 bar (5000 psi)	SAE 12
LB12-4-S-6G/S	Steel	350 bar (5000 psi)	G 3/4